



Visualizing Rhode Island's Housing Ecosystem

A presentation to the
Rhode Island Housing Resources Commission
December 20, 2022

Annette Mann Bourne
Research & Policy Director
[HousingWorks RI at RWU](#)

About HousingWorks RI at RWU



- Founded in 2004
- Integrated into Roger Williams University in 2014
- Conduct research and analyze data related to housing affordability in Rhode Island
- Connect the dots between housing affordability and economic development, and outcomes in health and education
- Publish annual Housing Fact Book in addition to issue briefs and special reports
- Visit www.housingworksri.org for more information

Scope of Work

- Build on existing housing system analyses
- Design systems “map” (visualization)
 - Identifies stakeholders
 - Role of stakeholders
 - ✓ Intersections
 - ✓ Statutory powers and duties
 - ✓ Relationships to funding sources
 - ✓ Target areas of responsibility
- Written report in addition to the visualizations

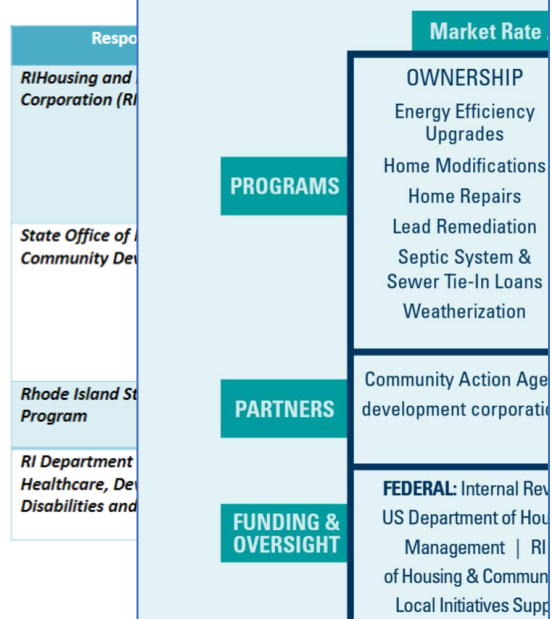


Existing Analyses

SP-40 Institutional Delivery Structure – 91.315(k)

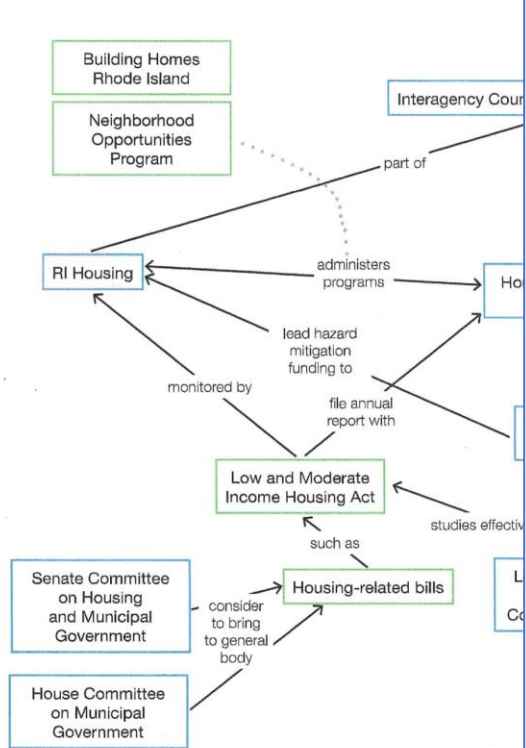
Explain the institutional structure through which the jurisdiction was transferred to a non-profit organization.

Table 54: Institutional Delivery Structure – 91.315(k)

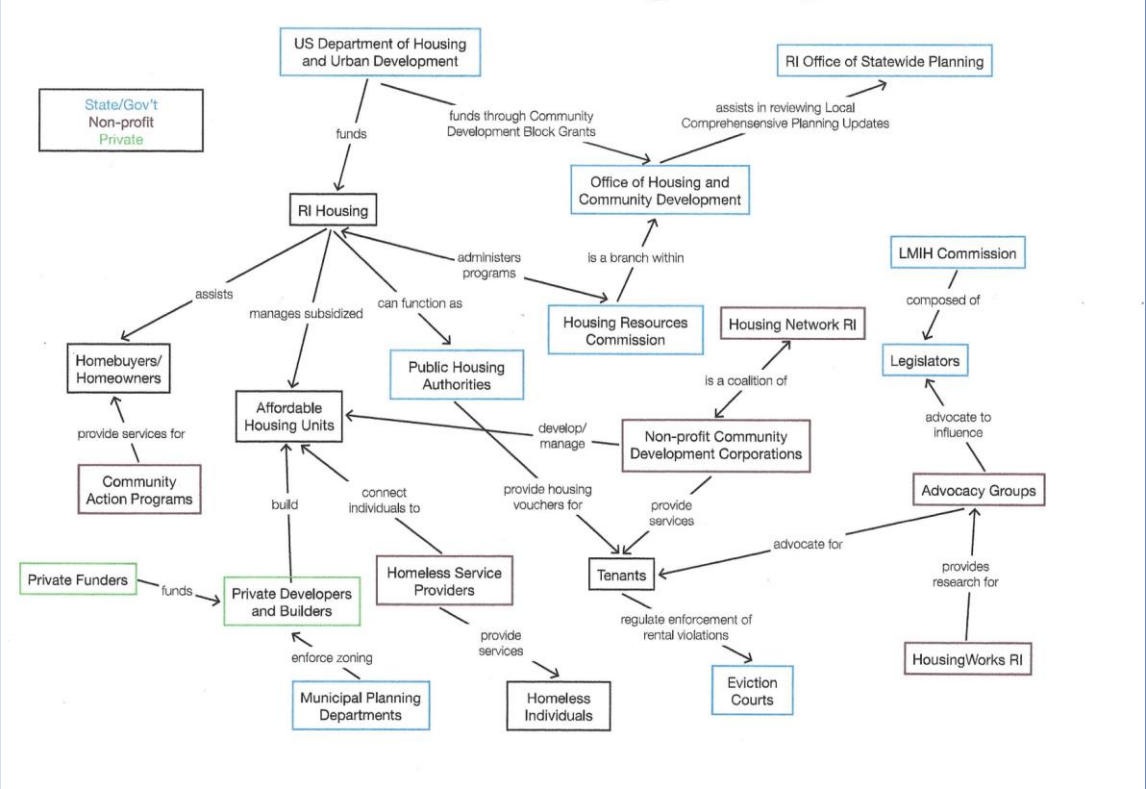


10 | 2018 Housing Fact Book | HousingWork

State Level Housing



Rhode Island Housing Ecosystem



HWRI's Methodology & Components

1. Methodology:

- a. Based on flow of funding—DOES NOT INCLUDE ARPA/SFRF

2. Major components:

- a. Source
- b. Program (organized by allocated/competitive and purpose)
- c. Amount of funding (most recent/best available)
- d. Entity deciding/making the award
- e. Entity disbursing the award (administering the program)

Caveats

- As inclusive a model as possible, however, did not accommodate private financial mortgage market
- Still may be errors and/or subjective choices that others may think about differently
- Work-in-progress

Working Visualizations: Excel

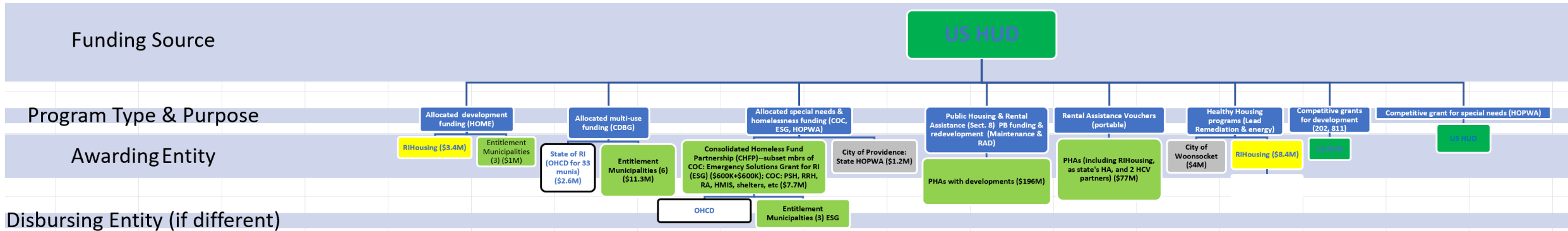
FUNDING SOURCES	Programs & Purpose (bold indicates LMH)	ENTITY AWARDING/DECIDING	ENTITY DISBURSING/ADMINISTERING	Eligible Entities (Program facilitator)
RIHousing	Mortgages (first-time HB): Mortgages	RIHousing	RIHousing/Participating Lenders	Homebuyers
RIHousing	Neighborhood Opportunities Program (NOP): Rental assistance	RIHousing	RIHousing	CDCs
State of RI	Lead Remediation & Programs: Health housing (lead)	RI Housing Resources Commission	RIHousing	Homeowners, including landlords
State of RI	BHRI: Development	RI Housing Resources Commission	RIHousing	All developer classes, incl municipalities
State of RI	Thresholds: Special needs housing	RIHousing	RIHousing	Nonprofit developers? Providers?
State of RI	Acquisition & Revitalization Program (ARP): Revitalization & development	RIHousing	RIHousing	All developer classes, incl municipalities
State of RI	Access to independence: Special needs housing	RIHousing	RIHousing	Nonprofit developers? Providers?
State of RI	Housing Production Fund: Development	RIHousing	RIHousing	All developer classes, incl municipalities
US OSE+	Housing Trust Fund (US): Development	RIHousing	RIHousing	All developer classes, incl. muni
US HUD	Lead Remediation & Programs	RI Housing Resources Commission	RIHousing	To confirm
US HUD	HOME Investment Partnerships Program	RIHousing	RIHousing	Homelessness Service Providers
US HUD	Housing Choice Vouchers	US HUD	RIHousing (PHA)+25 PHAs	Income-eligible renters
US IRS	Low-Income Housing Tax Credit	RIHousing	RIHousing	CDCs
State of RI	Emergency Shelters (part of CHF): Emergency housing	RI Homelessness Partnership (Subset of CoC/CHFP to HRC for approv	OHCD/CHFP	Homelessness Service Providers
State of RI	Rapid Re-housing: Special needs housing	RI Housing Resources Commission	OHCD	All developer classes, incl municipalities
US HUD	Emergency Solutions Grant (part of CHF)	RI Homelessness Partnership (Subset of CoC/CHFP to HRC for approv	OHCD/ESG Entitlement Cities (3)	Homelessness Awardees/Providers
US HUD	Transitional Housing (no new prog, will ask if fund existing)— part of CHF, confir	RI Homelessness Partnership (Subset of CoC/CHFP to HRC for approv	OHCD/ESG Entitlement Cities (3)	Homelessness Awardees/Providers
US HUD	Permanent Supportive Housing	RI Homelessness Partnership (Subset of CoC/CHFP to HRC for approv	OHCD/ESG Entitlement Cities (3)	Homelessness Awardees/Providers
US HUD	Title XX Funds (part of CHF)	RI DHS	CoC/HRC?	Homelessness Service Providers
US HUD	Lead Remediation & Programs	RI Housing Resources Commission	RIDOH	To confirm
US HUD	Housing Opportunities for People with AIDS (HOPWA)	RI OHCD	OHCD	To confirm
US HUD	CDBG (Home repairs)	RI OHCD	RI OHCD	Homeowners
US HUD	CDBG (Home repairs)	CDBG Entitlement Cities (6)	CDBG Entitlement Cities (6)	Homeowners
US HUD	Housing Opportunities for People with AIDS (HOPWA)	City of Providence	City of Providence	To confirm
US HUD	HOME Investment Partnerships Program	HOME Entitlement Cities (3)	HOME Entitlement Cities (3)	All developer classes, incl municipalities
US HUD	Lead Remediation & Programs	US HUD	Woonsocket PHA	To confirm
US HUD	Lead Remediation & Programs	US HUD	Providence PHA	To confirm
US HUD	Section 8/Rental Assistance Demonstration (RAD)	US HUD	PHAs	NA
US HUD	HUD 202	US HUD	US HUD	CDCs
US HUD	HUD 811	US HUD	US HUD	CDCs
State of RI	Home Modifications Grants: Healthy housing (accessibility)	RI Gov Comm on Disabilities	RI Gov Comm on Disabilities	Homeowners/Landlords
US DOE	Weatherization (Energy Efficiency): Healthy housing (energy)	RI DHS	CAPs	Homeowners/Landlords
US HHS	LIHEAP: Healthy housing (energy)	RI DHS	CAPs	Homeowners/Landlords
US VA	Veteran Affairs Supportive Housing (VASH) Vouchers	US VA	PHA?	PHA?
USDA/IRD	RHS 816*	USDA/IRD	USDA/IRD	Developers
USDA/IRD	Mortgages (Direct Subsidized/Guaranteed)	USDA/IRD	USDA/IRD & Participating Lenders	Homebuyers
Banks	Mortgages/Development Finance: Mortgages	Banks	Banks/Loan Servicers	Homebuyers
RI Infrastructure Bank (source?)	Septic System & Sewer Tie-in Loans: Infrastructure Improvement	RI OEM	RIHousing	DEM approves municipal participation through town hall

LEGEND	
Entities	Programs
RIHousing	Development program
State of RI, including state agencies other than RI HRC and OHCD	Rental Assistance
US HUD RI Housing Resources Commission, OHCD, CHFP	Special needs and emergency housing
Banks	
US entities (named)	

- Rejected, though could “live” somewhere
- Color coding
- Allows for extensive comments
- Links within

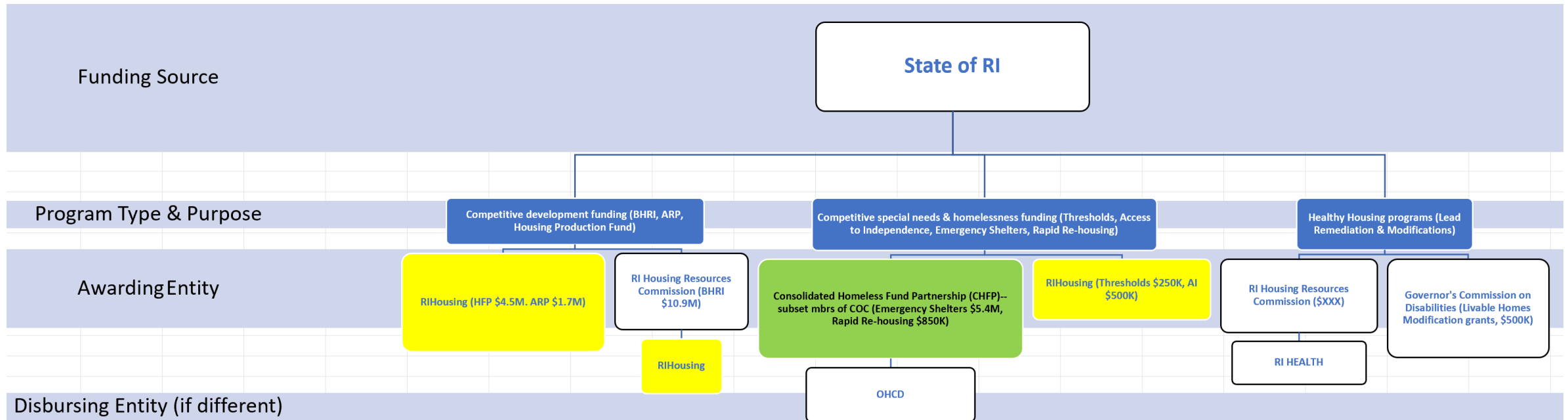


Working Visualizations: Hierarchical (US HUD)



- Traditional visually, but difficult to read
- Requires variety of charts—don't get to see the whole ecosystem

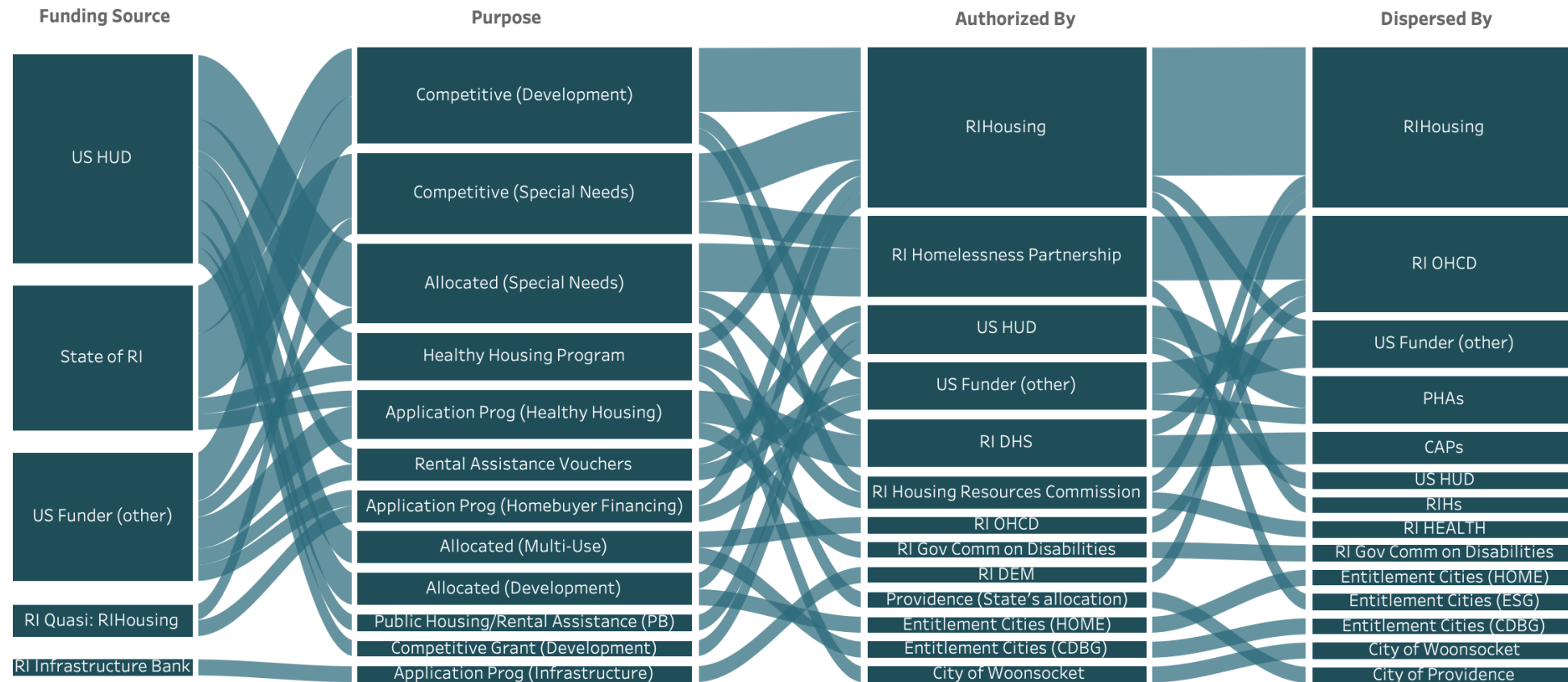
Working Visualizations: Hierarchical (State of RI)



- Traditional visually, but difficult to read
- Requires variety of charts—don't get to see the whole ecosystem

Working Visualizations: Tableau (Distributional)

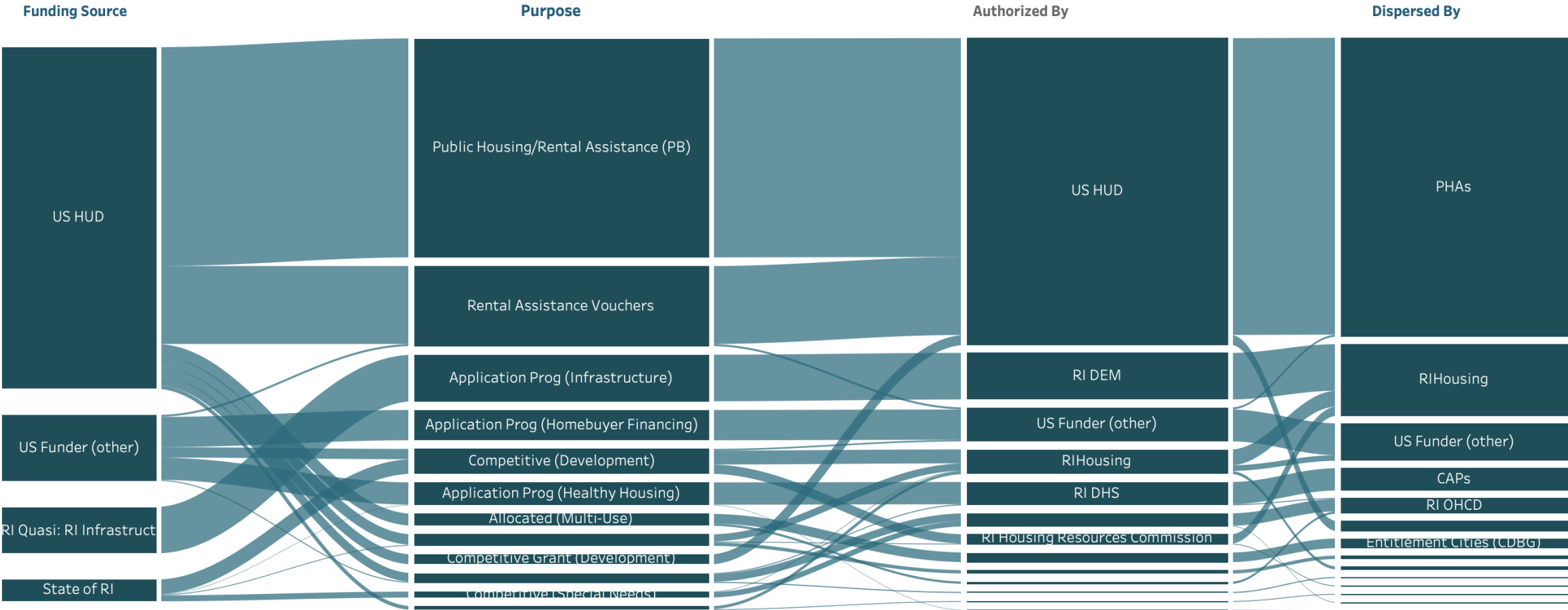
State Housing Ecosystem (Distribution Paths)



➤ Entire ecosystem ➤ “Live” interaction allows for additional information

Working Visualizations: Tableau (Relative Funding.v1)

State Housing Ecosystem (Relative Funding, w/o RIH)

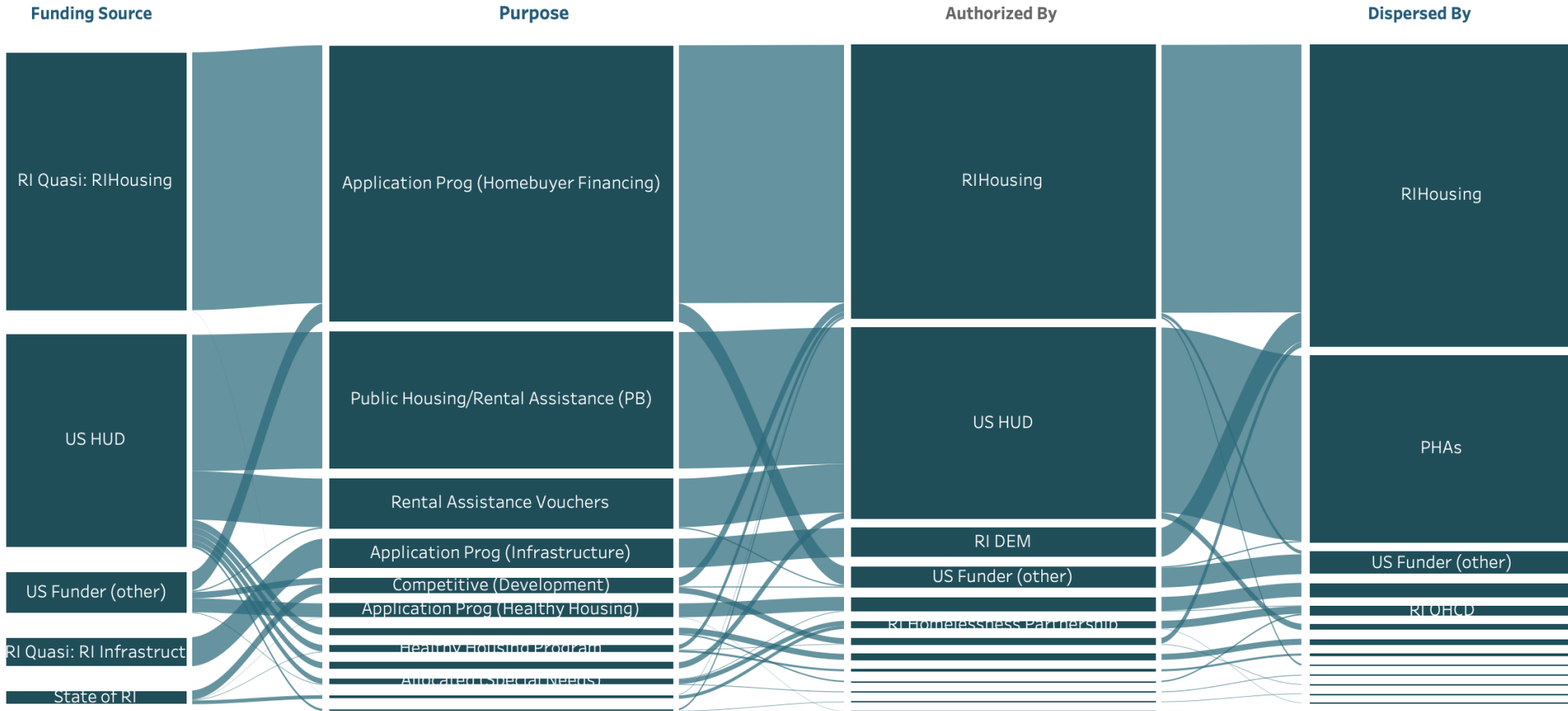


➤ Entire ecosystem ➤ “Live” interaction allows for additional information



Working Visualizations: Tableau (Relative Funding.v2)

State Housing Ecosystem (Relative Funding)

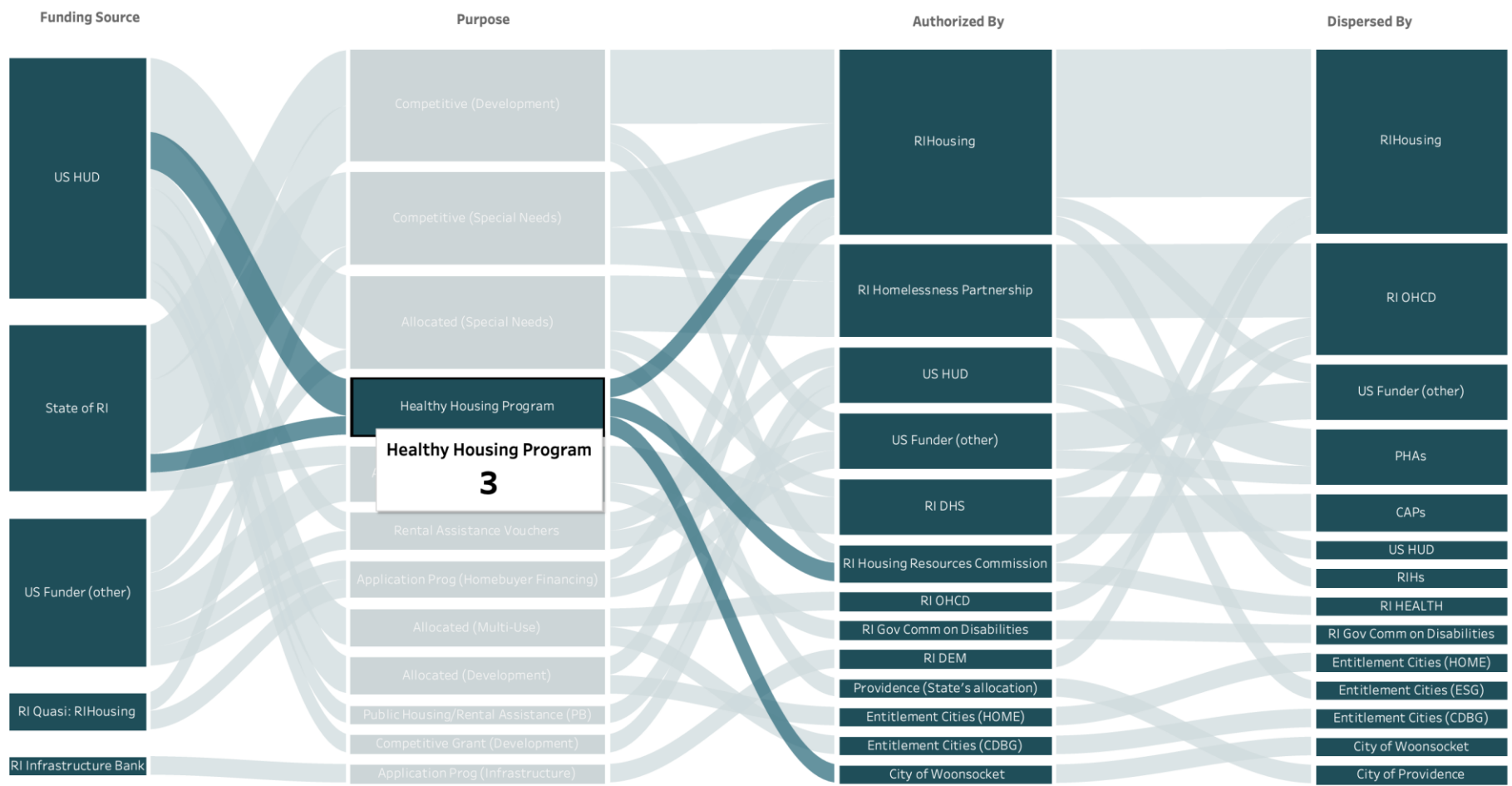


- Entire ecosystem
- “Live” interaction allows for additional information



Working Visualizations: Tableau (“Live” Screen Shot)

State Housing Ecosystem (Distribution Paths)



Thank You

Want to discuss further?
Contact: abourne@rwu.edu

CONNECT WITH US!



[HousingWorks RI](https://www.facebook.com/HousingWorksRI)



[@hwri](https://twitter.com/hwri)

www.HousingWorksRI.org